

## Image Correspondence

# Milia en Plaque on the Retroauricular Region

S. Priyanka<sup>1</sup>, K. V. T. Gopal<sup>1</sup>, S. Jayasree Sailakshmi<sup>1</sup>, K. Sudhir Babu<sup>2</sup>

<sup>1</sup>Department of Dermatology, Venereology, and Leprosy, Maharajah's Institute of Medical Sciences, Vizianagaram, <sup>2</sup>Department of Pathology, Vijaya Diagnostic Center, Visakhapatnam, Andhra Pradesh, India.

### \*Corresponding author:

K. V. T. Gopal  
Department of Dermatology,  
Venereology, and Leprosy,  
Mararajah's Institute of Medical  
sciences, Vizianagaram,  
Andhra Pradesh, India.  
kvtgopal77@gmail.com

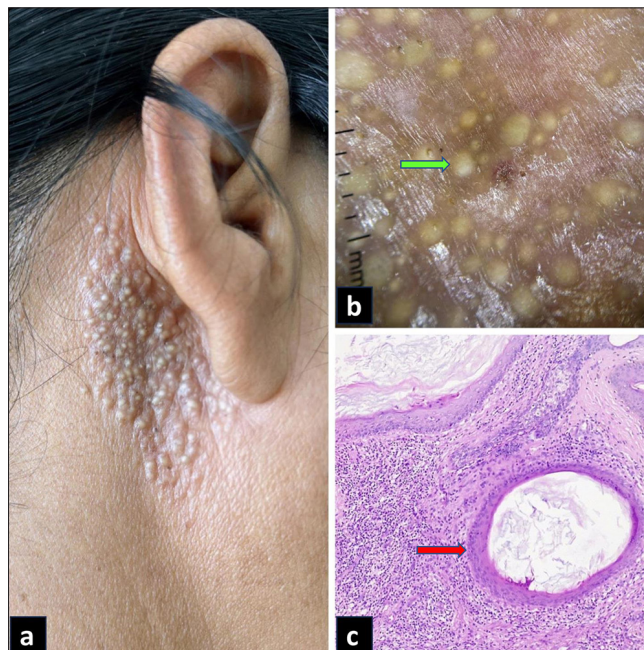
A 40-year-old female presented with asymptomatic grouped papules behind the right ear for 1 year. There was no previous history of local trauma or application of any topical medication. On examination, multiple grouped white to yellowish papules, varying in size from 1 to 3 mm, were seen on an erythematous plaque on the right retroauricular region [Figure 1a].

Dermoscopy showed multiple yellowish-white cysts of varying sizes on an erythematous background [Figure 1b]. Histopathology showed multiple epidermal cysts in the dermis lined by thin stratified squamous epithelium with lamellated keratin in the cyst cavity [Figure 1c].

Received: 11 December 2025  
Accepted: 27 December 2025  
EPub Ahead of Print: 26 March 2026  
Published:

DOI  
10.25259/IJPGD\_250\_2025

### Quick Response Code:



**Figure 1:** (a) Multiple grouped white to yellowish papules of varying sizes on an erythematous plaque on the right retro auricular region, (b) multiple yellowish- white cysts (green arrow) and a few comedo like openings on an erythematous background (DermLite DL4, ×10 magnification, polarised mode) (c) multiple keratin cysts (red arrow) with adjacent dermis showing lymphocytic infiltrate (haematoxylin and eosin, ×100).

This is an open-access article distributed under the terms of the Creative Commons Attribution-Non Commercial-Share Alike 4.0 License, which allows others to remix, transform, and build upon the work non-commercially, as long as the author is credited and the new creations are licensed under the identical terms.

©2026 Published by Scientific Scholar on behalf of Indian Journal of Postgraduate Dermatology

A diagnosis of milia en plaque was made. In view of the absence of any preceding trauma, use of topical or systemic drugs, and inflammatory skin diseases, it was classified as a primary type of milia en plaque. Complete resolution of the lesion with residual pigmentation was achieved with electrodesiccation.

**Ethical approval:** The Institutional Review Board approval is not required.

**Declaration of patient consent:** The authors certify that they have obtained all appropriate patient consent forms. In the form, the patients have given their consent for their images and other clinical information to be reported in the journal. The patients understand

that their names and initials will not be published and due efforts will be made to conceal their identity, but anonymity cannot be guaranteed.

**Financial support and sponsorship:** Nil.

**Conflicts of interest:** There are no conflicts of interest.

**Use of artificial intelligence (AI)-assisted technology for manuscript preparation:** The authors confirm that there was no use of artificial intelligence (AI)-assisted technology for assisting in the writing or editing of the manuscript and no images were manipulated using AI.

**How to cite this article:** Priyanka S, Gopal KV, Sailakshmi SJ, Babu KS. Milia en Plaque on the Retroauricular Region. Indian J Postgrad Dermatol. doi: 10.25259/IJPGD\_250\_2025