

## Innovations and Ideas

# Formalin Flush to Remove a Stuck Biopsy Specimen

Azharuddin Mazharuddin Shaikh<sup>1</sup>, Nachiket Madhukarrao Palaskar<sup>1</sup>, Yuvraj Eknath More<sup>1</sup>

<sup>1</sup>Department of Dermatology, Venereology and Leprosy, Pimpri Chinchwad Municipal Corporation (PCMC's) Post Graduate Institute, Yashwantrao Chavan Memorial Hospital, Pimpri, Pune, Maharashtra, India.

### \*Corresponding author:

Azharuddin Mazharuddin Shaikh,  
Department of Dermatology, Venereology and Leprosy, Pimpri Chinchwad Municipal Corporation (PCMC's) Post Graduate Institute, Yashwantrao Chavan Memorial Hospital, Pimpri, Pune, Maharashtra, India.

[sk.azharuddin1@gmail.com](mailto:sk.azharuddin1@gmail.com)

Received: 31 December 2024  
Accepted: 11 January 2025  
Epub Ahead of Print: 26 February 2025  
Published:

DOI  
[10.25259/IJPGD\\_265\\_2024](https://doi.org/10.25259/IJPGD_265_2024)

Video available on:  
[https://doi.org/10.25259/IJPGD\\_265\\_2024](https://doi.org/10.25259/IJPGD_265_2024)

Quick Response Code:



## BACKGROUND

- During a biopsy procedure, small tissue samples are collected. These specimens sometimes get stuck in the biopsy punch or needle due to their small size, texture or adherence to the tool [Figure 1].
- Specimen removal with other modalities, such as needle or toothed forceps, can damage the specimen, potentially affecting pathological findings.
- The formalin flush helps avoid damage to the sample that might occur with mechanical removal methods.

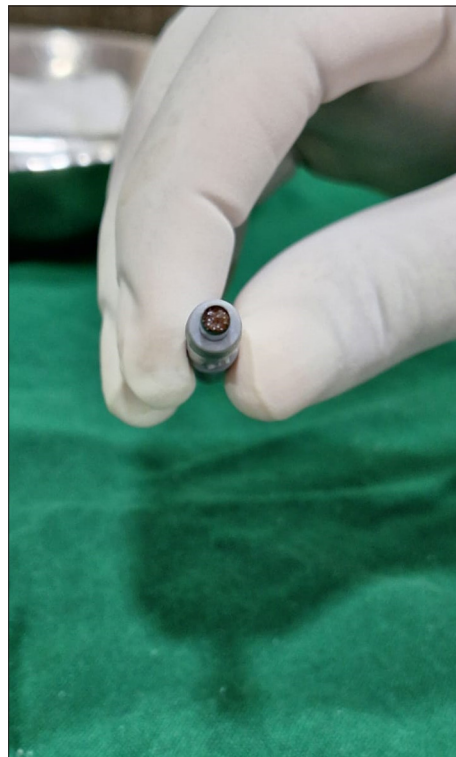


Figure 1: Stuck biopsy specimen.

This is an open-access article distributed under the terms of the Creative Commons Attribution-Non Commercial-Share Alike 4.0 License, which allows others to remix, transform, and build upon the work non-commercially, as long as the author is credited and the new creations are licensed under the identical terms.

©2025 Published by Scientific Scholar on behalf of Indian Journal of Postgraduate Dermatology



**Figure 2:** Formalin push with partially closed lid.



**Figure 3:** Specimen collection.

## MATERIALS REQUIRED

- Formalin solution (10% neutral-buffered formalin is standard)
- A syringe 2cc (appropriate size for the biopsy punch)
- Sterile gloves
- A sterile container to collect the specimen.



**Video 1:** Video showing formalin flush.

## Procedure

1. Attach the syringe
  - Fill the syringe with formalin
  - Secure
  - Gently insert the complete hub of the syringe into the back side of the punch [Figure 2].
2. Flush with formalin
  - Gently and steadily push formalin through the biopsy punch
  - Ensure the fluid flows in the direction that will expel the specimen into the sterile container containing formalin solution [Video 1].
3. Collect the specimen
  - Allow the specimen to enter a formalin-filled collection container with a partially closed lid. Avoid damaging it with excessive force [Figure 3].
4. Repeat if the punch does not get dislodged
  - If the first flush does not dislodge the specimen, try again with slightly more force or adjust the instrument's angle.

## Post-procedure

1. Inspect the specimen
  - Ensure the specimen is intact and suitable for pathological evaluation.
2. Document the procedure
  - Note the use of a formalin flush and any complications for accurate records.

## Advantage

Specimen is less damaged as compared with other modalities.

### Tips

- Use caution when flushing to avoid damaging delicate biopsy samples
- If the specimen remains stuck despite flushing, consider alternative methods.

### CONCLUSION

Formalin flush is a reliable, safe, and efficient technique for retrieving stuck biopsy specimens, improving specimen preservation, and contributing to more accurate diagnostic results. When used appropriately, it enhances the overall effectiveness of biopsy procedures, ensuring that quality specimens are available for further analysis.

**Ethical approval:** Institutional Review Board approval is not required.

**Declaration of patient consent:** Patient's consent not required as there are no patients in this study.

**Financial support and sponsorship:** Nil.

**Conflicts of interest:** There are no conflicts of interest.

**Use of artificial intelligence (AI)-assisted technology for manuscript preparation:** The authors confirm that there was no use of artificial intelligence (AI)-assisted technology for assisting in the writing or editing of the manuscript and no images were manipulated using AI.

**How to cite this article:** Shaikh AM, Palaskar NM, More YE. Formalin Flush to Remove a Stuck Biopsy Specimen. Indian J Postgrad Dermatol. doi: 10.25259/IJPGD\_265\_2024