

Image Correspondence

## Erythema Annulare Centrifugum as Indicator of Internal Malignancy

Gopalsing Rameshsing Rajput<sup>1</sup>, Ruchi Hemdani<sup>2</sup>, Chrisinder Kaur<sup>1</sup>, Veena Kharayat<sup>1</sup>

<sup>1</sup>Department of Dermatology, Institute of Naval Medicine, INHS Asvini, Mumbai, Maharashtra, <sup>2</sup>Department of Dermatology, Himalayan Institute of Medical Sciences, Dehradun, Uttarakhand, India.

**\*Corresponding author:**

Gopalsing Rameshsing Rajput,  
Department of Dermatology,  
Institute of Naval Medicine,  
INHS Asvini, Mumbai,  
Maharashtra, India.

[gopal.270985@gmail.com](mailto:gopal.270985@gmail.com)

Received: 05 May 2024

Accepted: 16 November 2024

EPub Ahead of Print: 28 December 2024

Published:

**DOI**

10.25259/IJPGD\_69\_2024

**Quick Response Code:**



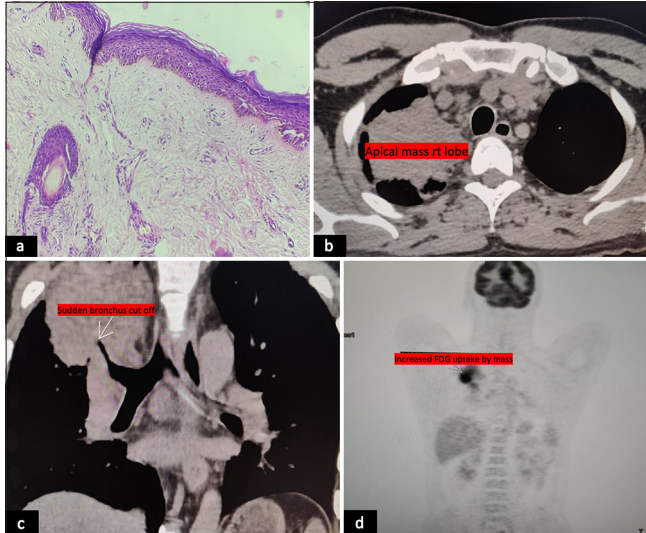
A 46-year-old male presented with well-defined annular plaque with central clearing over right dorsum of hand, nape of neck and buttocks since 3 months [Figure 1a-c]. The lesions were accompanied by itching. He was being treated as case of dermatophyte infection with topical and systemic antifungal without much relief. Dermoscopy of lesions revealed whitish trailing scale with advancing erythematous edge [Figure 1d]. Potassium hydroxide (KOH, 10%) mount was negative. The histopathology of lesion revealed mild spongiosis, parakeratosis and minimal perivascular and periappendageal lymphocytic infiltrate in upper dermis [Figure 2a]. He was labelled as a case of erythema annulare centrifugum (EAC). He had history of weight loss in past 3 months accompanied by non-productive cough. High-resolution computed tomography



**Figure 1:** Well-defined annular plaque with central clearing and trailing scale and advancing erythematous border over dorsum of (a) the right hand, (b) buttock and (c) nape of neck, (d) dermoscopy of lesion showing whitish scale with advancing erythematous border (Dermlite dl3 gen, ×10 magnification, Made in USA).

This is an open-access article distributed under the terms of the Creative Commons Attribution-Non Commercial-Share Alike 4.0 License, which allows others to remix, transform, and build upon the work non-commercially, as long as the author is credited and the new creations are licensed under the identical terms.

©2024 Published by Scientific Scholar on behalf of Indian Journal of Postgraduate Dermatology



**Figure 2:** Histopathological examination showing orthokeratosis, minimal (a) spongiosis along with minimal perivascular and periadnexal lymphocytic infiltrate (Haematoxylin and eosin,  $\times 100$ ), (b and c) high-resolution computed tomography showing mass in the right upper lobe of lung and (d) positron emission tomography scan showing avid uptake in the upper lobe of the right lung.

chest revealed large mass in the right upper lobe [Figure 2b and c]. His lung positron emission tomography scan revealed uptake in the upper right lobe [Figure 2d]. He was diagnosed as case of small-cell lung carcinoma. This image depicts the possibility of EAC in patients with figurate erythema morphology which on age-appropriate malignancy

screen can result in early diagnosis of internal malignancy. These images also depict the importance of dermoscopy in differentiating tinea infection from EAC in busy outpatient department days.

#### Ethical approval

Institutional Review Board approval is not required.

#### Declaration of patient consent

The authors certify that they have obtained all appropriate patient consent.

#### Financial support and sponsorship

Nil.

#### Conflicts of interest

There are no conflicts of interest.

#### Use of artificial intelligence (AI)-assisted technology for manuscript preparation

The authors confirm that there was no use of artificial intelligence (AI)-assisted technology for assisting in the writing or editing of the manuscript and no images were manipulated using AI.

**How to cite this article:** Rajput GR, Hemdani R, Kaur C, Kharayat V. Erythema Annulare Centrifugum as Indicator of Internal Malignancy. *Indian J Postgrad Dermatol.* doi: 10.25259/IJPGD\_69\_2024